

Close-up: Tony Crowley



Photo courtesy of Tony Crowley

Crowley's interest in and work with prairie themes began when, as a faculty member at Grinnell, he became involved in the Center for Prairie Studies. His interest in all things prairie has been a recurring element in his studio practice ever since. Currently a professor of art at Illinois State University, he continues to explore the significance of place in his work while encouraging his students to do the same through assignments and discussions.



ENCROACHMENT, 12 x 8, woodcut.
This image was influenced by the gradual transformation of the prairie by settlements, agriculture, etc..

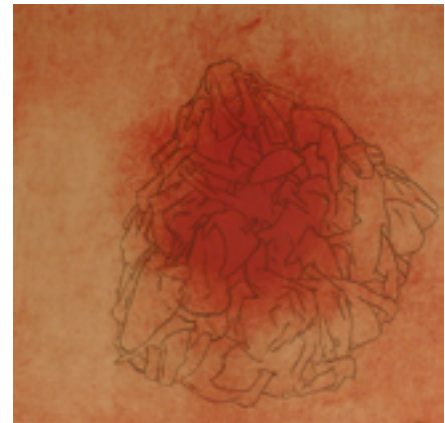
STORM, 8 x 8, engraving and drypoint.

Of course, we are all aware of the power of storms on the prairie and this alludes to that power and chaos, but another underlying theme is the storm of life forms that swarm the prairie and bring to it unending energy and variety.



GERMINATION, 10 x 10, engraving and collagraph.

The process of germination is filled with potential energy and the anticipated bursting forth of life. This image addresses that instant that the process of germination begins.



TRANSFORMED, 12 x 8, woodcut.

This woodcut addresses the conclusion of the direction suggested in Encroachment in which the land is given over fully to human intervention.

